

# **Improving Brain Assessment Accessibility: Validating Mobile EEG**

Katie Li Kerupetski

Mentor: Kate Brody Nooner, PhD

Psychology Department, The University of North Carolina Wilmington

# Introduction

- Improving accessibility to mental health services
- Bringing brain assessment to clinics
  - Emotiv Mobile EEG

# Method

- IRB Approved EEG study with kids
  - Protocol Number; H1213-165
- Study sites
  - The Carousel Center
  - Department of Social Services (DSS)
- EEG Assessments
  - Resting State EEG
  - Go NoGo Task Based EEG

# Traditional EEG

- Electrode Cap
  - 64 electrodes
  - Has several limitations



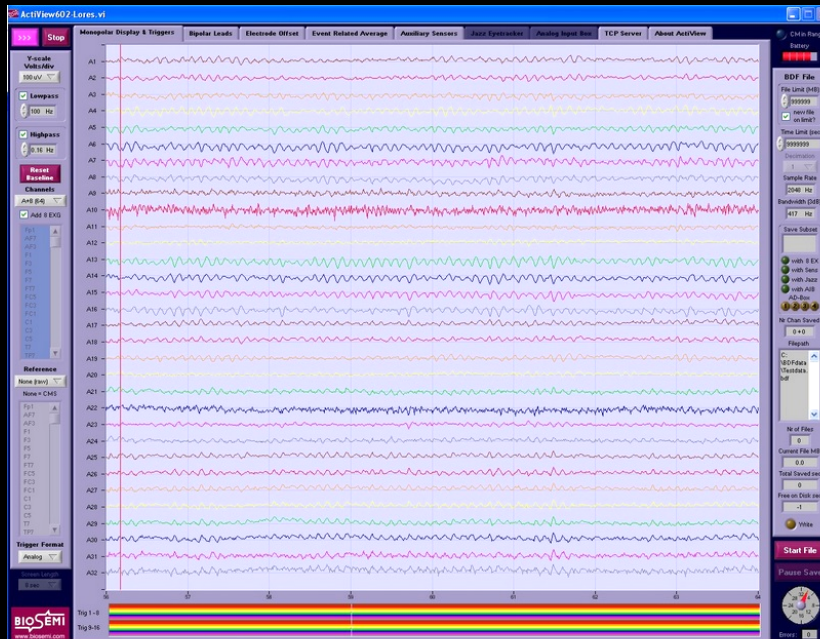
# Emotiv Mobile EEG

- Flexible branches with electrodes
  - 14 electrodes, 7 on each side
  - Variety of benefits

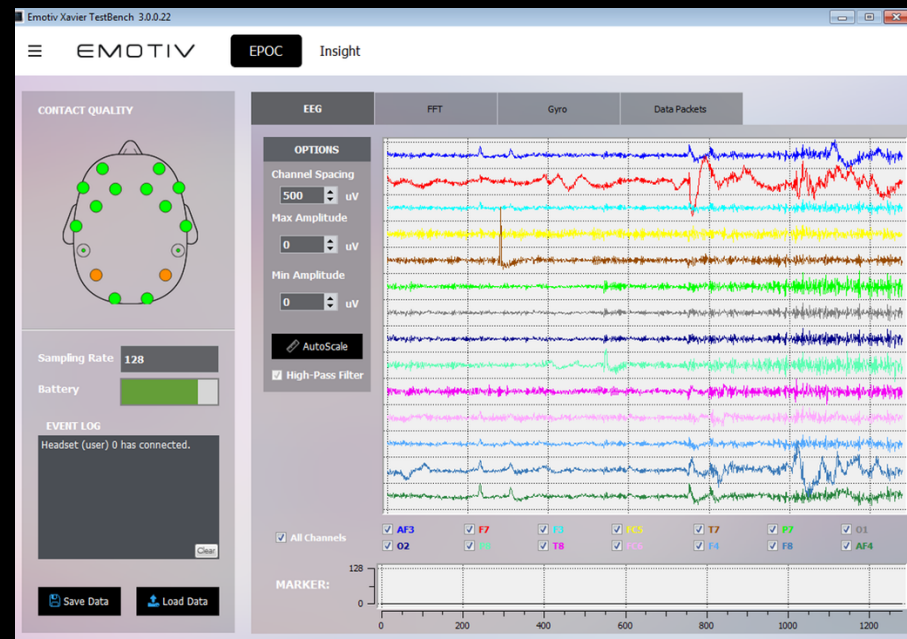


# Data Comparison

## Traditional EEG Data



## Emotiv Data



# Future Plans

- Honors Project
  - Fall 2015 and Spring 2016
- Defense
  - Spring 2016
- Graduate
  - Spring 2016

**Thank you!**

Questions?